



CRAFTING  
TINY LUXURY  
*for big living*



# YOUR DREAM YOUR HOME YOUR *style*



## About Us

We're **Big Life Tiny Home**—a bunch of dreamers, builders, and lovers of all things small and luxurious. Think **high-quality, custom designs** that give those multimillion-dollar mansions a run for their money. Our homes aren't just **100% customisable**, they're built to be an extension of your style and dreams.

Want a **granny flat** that doubles as an income generator? Done. A **tiny house** that's all yours, from the finishes down to the floor plan? We've got you covered. We build homes that fit your life like a glove—and we have a blast doing it!

## Meet the Founder



Hi, I'm Cris—an interior designer of 25 years, single mum, and badass lady tradie! Three years ago, I pulled together a dream team with one goal: to design and build the **most beautiful tiny homes** in Australia. And guess what? We think we've nailed it! With a mix of creativity, hard work, and a lot of laughs, we've been turning **big dreams** into tiny realities ever since.







# Contents

<b>Our Services</b>	<b>4</b>
<b>The Big Life Difference</b>	<b>5</b>
<b>Inclusions &amp; Upgrades</b>	<b>6-7</b>
<hr/>	
<b>The Summer House</b>	<b>8-9</b>
<b>The Big Summer House</b>	<b>10-11</b>
<b>The Cottage</b>	<b>12-13</b>
<b>The Bungalow   Modular</b>	<b>14-15</b>
<b>The Escapist</b>	<b>16</b>
<b>The Den</b>	<b>17</b>
<hr/>	
<b>Mood Boards   Customisation</b>	<b>18</b>
<b>FAQ</b>	<b>19</b>
<b>Contact Us</b>	<b>20</b>







## TINY HOMES



## GRANNY FLATS



## MODULAR BUILDS

# How does it work?



We begin with a **no obligation consultation** in person or over the phone to get to know you and understand your needs & desires!



Next, our expert designers get to work on **custom floor plans** and **mood boards** that reflect your style, from the perfect layout to selecting the exact finishes you love.



Once we've nailed down the details, we'll provide a transparent **quote** covering everything — no hidden costs, just **beautiful design and craftsmanship**.



We'll **visit your property** (or review the site remotely) to assess the land, check for site access, and ensure we meet all council regulations.



With the design finalised, our expert builders **bring your vision to life** off-site, minimising disruption to your property.



Once your home is ready, we'll arrange **delivery and installation** right to your property, ensuring a smooth transition as we prepare the site for your new space.



Your journey doesn't end there! We will make you part of our community and hope to become lifelong friends! You will never be just a number to us... We listen, we get you, we are here for you.

120\* DAYS



# Our Difference

## 100% CUSTOMISABLE

No cookie cutter tiny homes for you! Whether its a few windows or a whole new plan, we design for your specific climate and location.



## BESPOKE INTERIOR DESIGN

We offer fully customised interior design services, including a stunning mood board that showcases your unique fixtures and finishes — all on the house (a \$2500 value)!



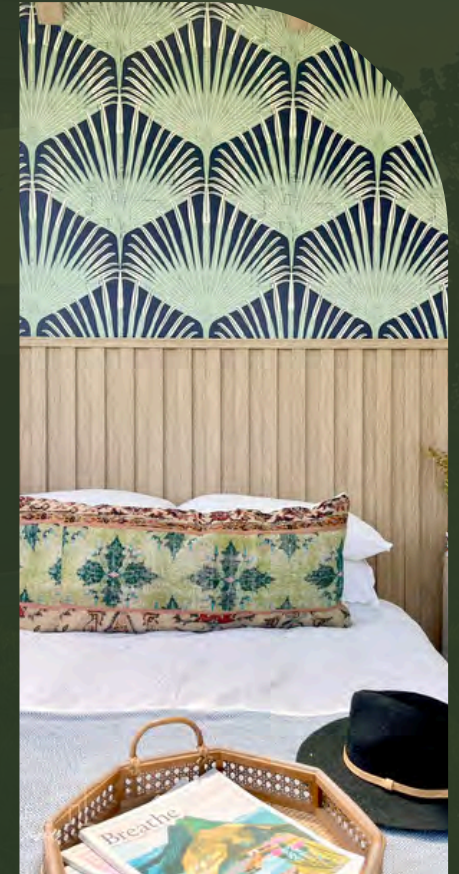
## HIGH QUALITY LUXURY

Who says tiny can't be luxurious? With over 25 years of design expertise, we bring the quality and elegance of multi-million dollar homes to a space that perfectly fits your lifestyle.



## SMART INVESTMENT

Turn your backyard into a money-maker! A Big Life Tiny Home not only adds value to your property—it creates income-generating opportunities that can transform your financial future.



# Base Inclusions

GENERAL	Bungalow Modular	Summer House Double Loft	Big Summer House Extended Loft	Cottage Single Level	Den Studio	Escapist Airbnb
Starting Price	\$190,000	\$138,900	\$145,900	\$143,000	\$105,000	\$129,000
Steel Frame (Engineered)	✓	✓	✓	✓	✓	✓
Trimdeck Steel Roof	✓	✓	✓	✓	✓	✓
Tri Axle Trailer with electric brakes & Levelling Legs	✓	✓	✓	✓	✓	✓
Aluminium single glazed windows + screens	✓	✓	✓	✓	✓	✓
Timber french doors	✓	✓	✓	✓		
Bifold Doors					✓	
Gas Hot Water System	✓	✓	✓	✓	✓	✓
Engineered Timber-Look Hybrid Floors	✓	✓	✓	✓	✓	✓
R3.4 Insulation Batts (Walls & Ceiling)	✓	✓	✓	✓	✓	✓
Ceiling LED Down lights	10x	6x	6x	4x	4x	4x
Double Power Points	8x	8x	8x	8x	4x	5x
Standard Flush Toilet	✓	✓	✓	✓	✓	✓
Acrylic Shower Tray + Semi-Frameless Shower Screen	✓	✓	✓	✓	✓	✓
Kitchen & Bathroom Mixers	✓	✓	✓	✓	✓	✓
Stainless Steel Kitchen Sink	✓	✓	✓	✓	✓	✓
Storage Stairs		✓	✓			





# Upgrades

<b>Solar Off-Grid Package (20-33kW)</b>
<b>Compost Toilet (Clivus Multrum CM2)</b>
<b>Cinderella Incineration Toilet (Electric)</b>
<b>Dry Flush Toilet</b>
<b>Kitchen Sink &amp; designer tap ware in feature copper or finish</b>
<b>Exterior Shower &amp; Bath Taps</b>
<b>Marble Mosaic Shower Floor</b>
<b>Bone inlay bathroom or Designer framed mirror</b>
<b>Heated Towel Rail</b>
<b>Acrylic bath (not plumbed in)</b>
<b>3 kg Camec washing machine top load 550</b>
<b>Feature Ceiling Beams</b>
<b>Sliding Doors</b>
<b>Bifold Doors</b>
<b>Roller Blinds</b>
<b>Velux Fixed Skylight</b>
<b>Block-out Skylight Blind</b>
<b>Reverse Cycle Air Conditioning (2.4 KW)</b>
<b>Bioethanol Fire (340mm Eco Smart Fire)</b>
<b>Bioethanol Fire (Eco Smart Fire)</b>

<b>Wallpaper</b>
<b>Antique Bronze Locks and Handles</b>
<b>Custom Joinery (Hamptons Style or Laminate)</b>
<b>Induction Cooktop (2 Burner)</b>
<b>Induction Cooktop (4 Burner)</b>
<b>Gas Cooktop (4 Burner)</b>
<b>Built-in Oven Microwave Combination</b>
<b>Porcelain Benchtop</b>
<b>Dishwasher (45cm)</b>
<b>Retro Fridge (202L)</b>
<b>Westinghouse 350L Top Mount Fridge</b>
<b>Custom furnishing &amp; décor package</b>
<b>Seat cushions in custom fabric or PU leather</b>
<b>Modular Decks &amp; Decks on Trailer</b>

## Upgrade Packages Available!

Our upgrades vary for each model, offering personalised touches of luxury and style. Don't see what you're after? Request the full specs list, and we'll send them your way.

Your wish is our command!

[www.biglifetinyhome.com.au](http://www.biglifetinyhome.com.au) | (07) 5603 5501





# THE SUMMER HOUSE

Single Loft 7.6

SIZE: 7.6m L x 2.5m W x 4.2m H

Starting from \$138,900



Sleeps  
3 - 4



1 x Queen Bed  
+ Daybed



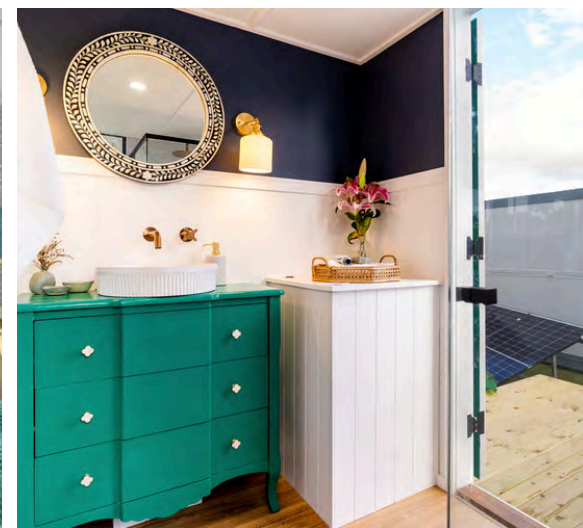
Full sized  
Kitchen



Full sized  
Bathroom

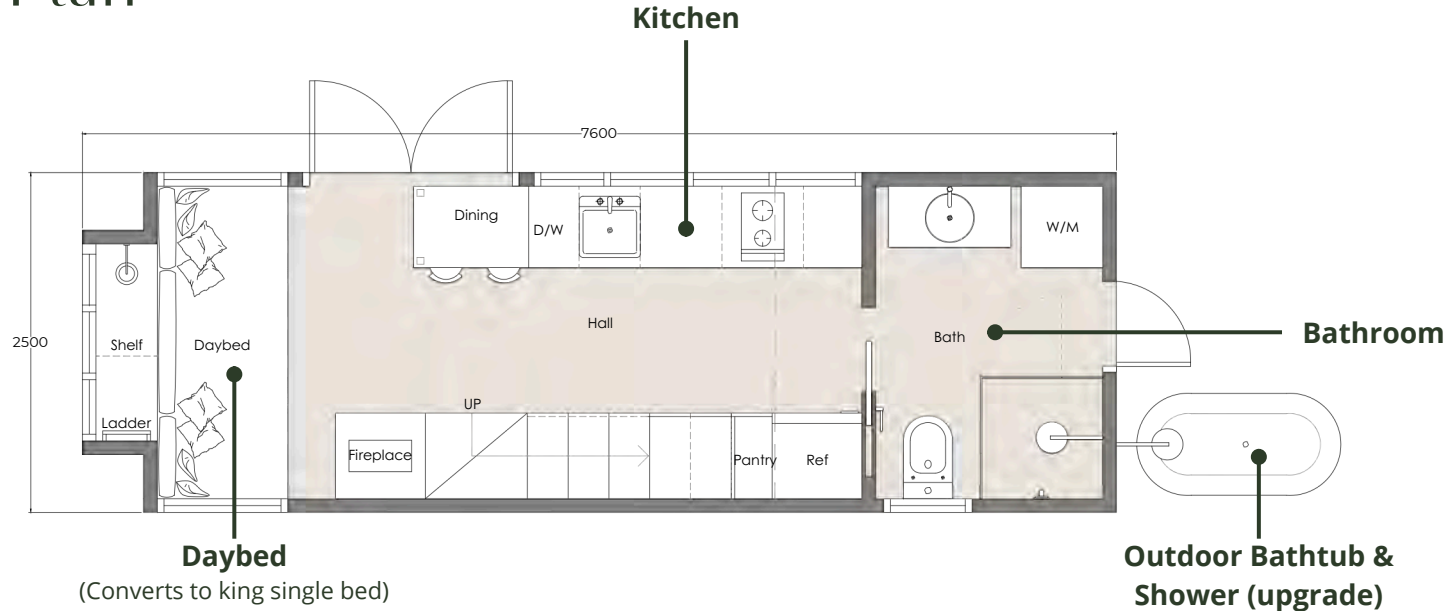


Under Stair  
Storage

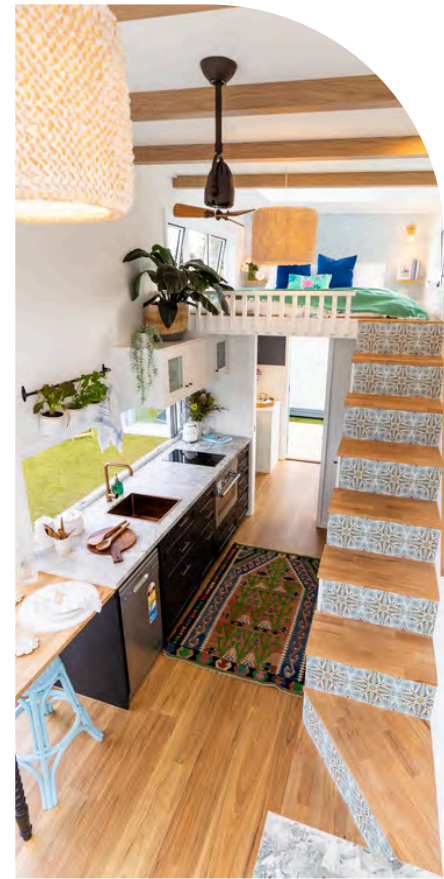
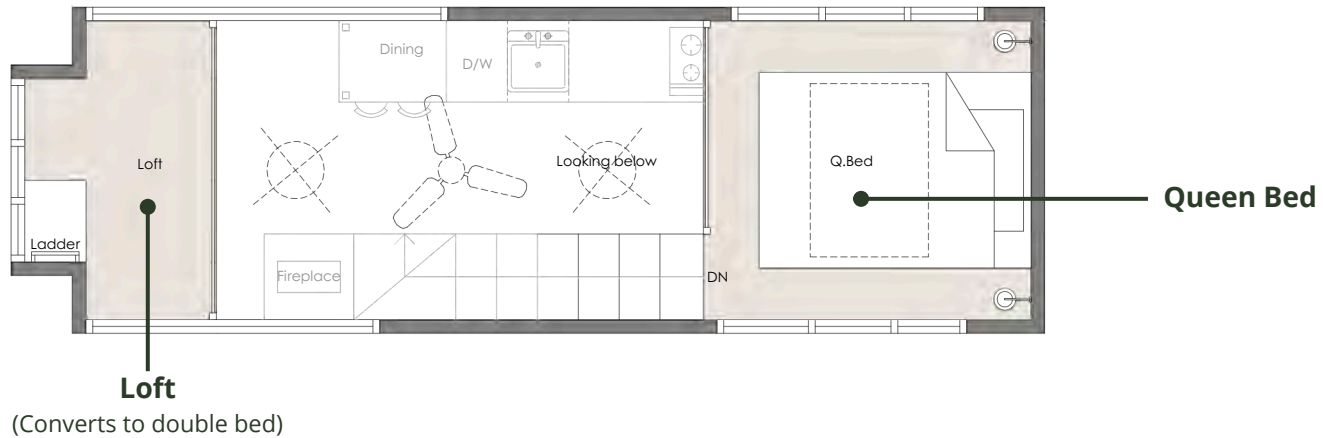




# Floor Plan



# Loft Plan





# THE BIG SUMMER HOUSE

Extended Double Loft

SIZE: 8.45m L x 2.5m W x 4.2m H

Starting from \$145,900



Sleeps 4



1 x Queen Bed  
+ Double Loft



Full sized  
Kitchen



Full sized  
Bathroom



Under Stair  
Storage

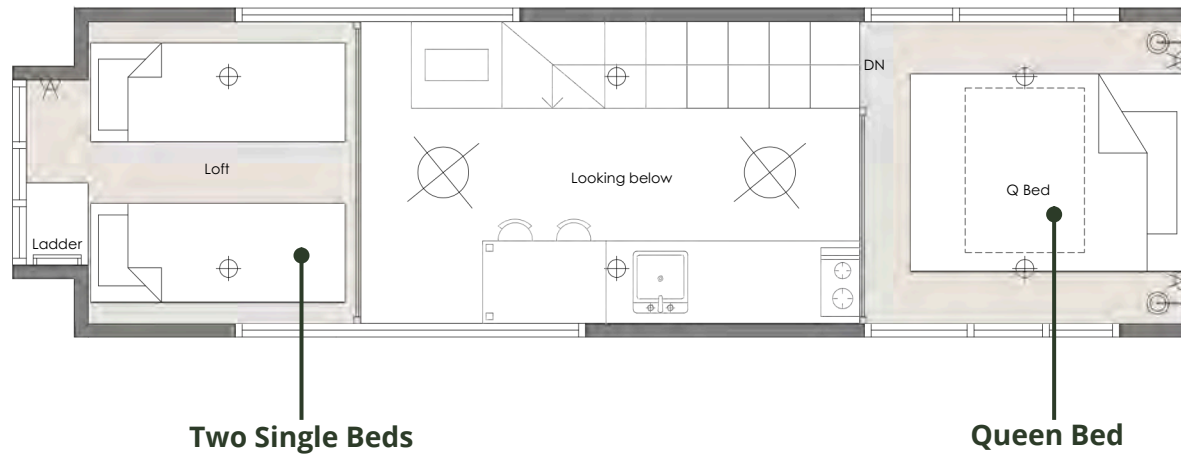




# Floor Plan



# Loft Plan





# THE COTTAGE

Single Level

SIZE: 9.45m L x 2.5m W x 4.2m H

Starting from \$143,000



Sleeps 2-3



1 x Queen Bed  
+ Daybed



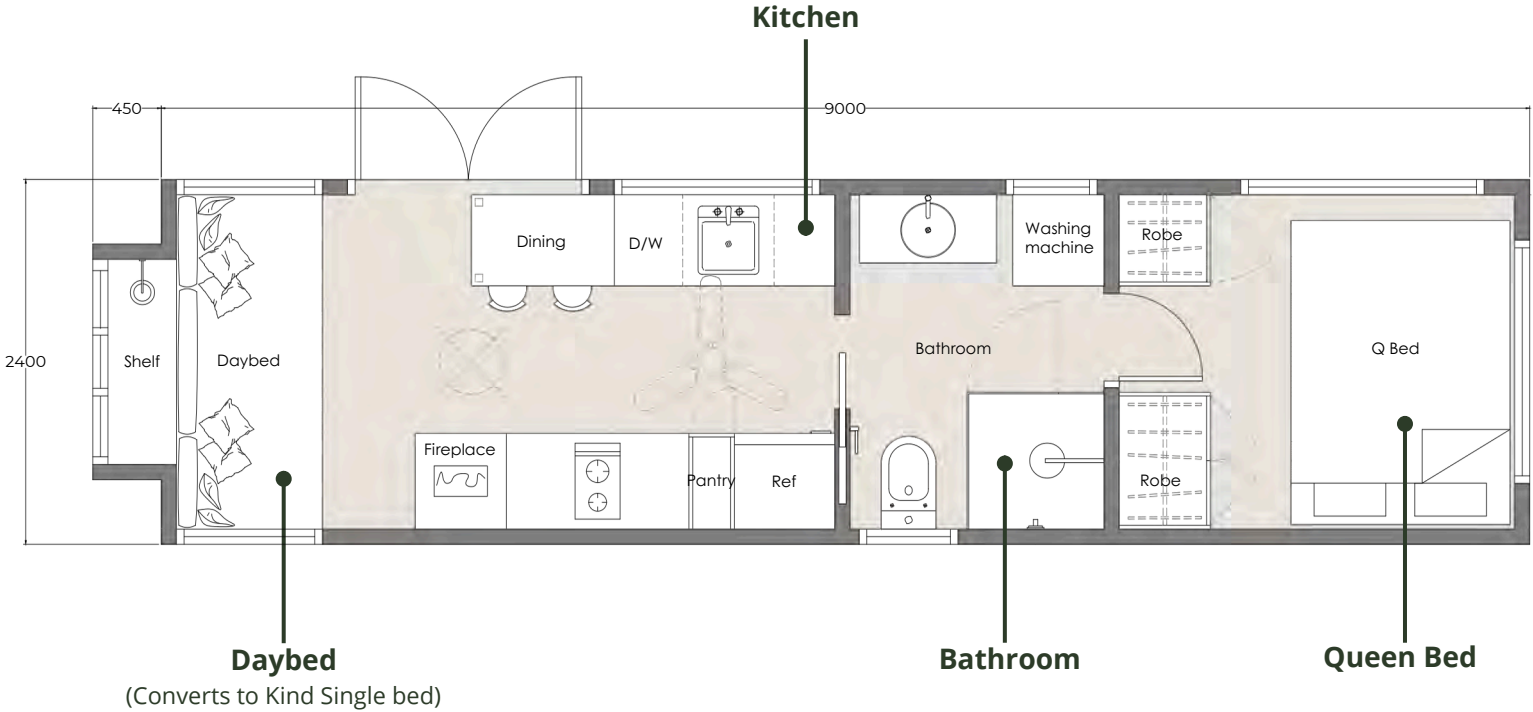
Full sized  
Kitchen



Full sized  
Bathroom



# Floor Plan





# THE BUNGALOW

## Modular Granny Flat

SIZE: 11m L x 3.5m W x 4.2m H

Starting from \$190,000



Sleeps 2



1 x Queen Bed



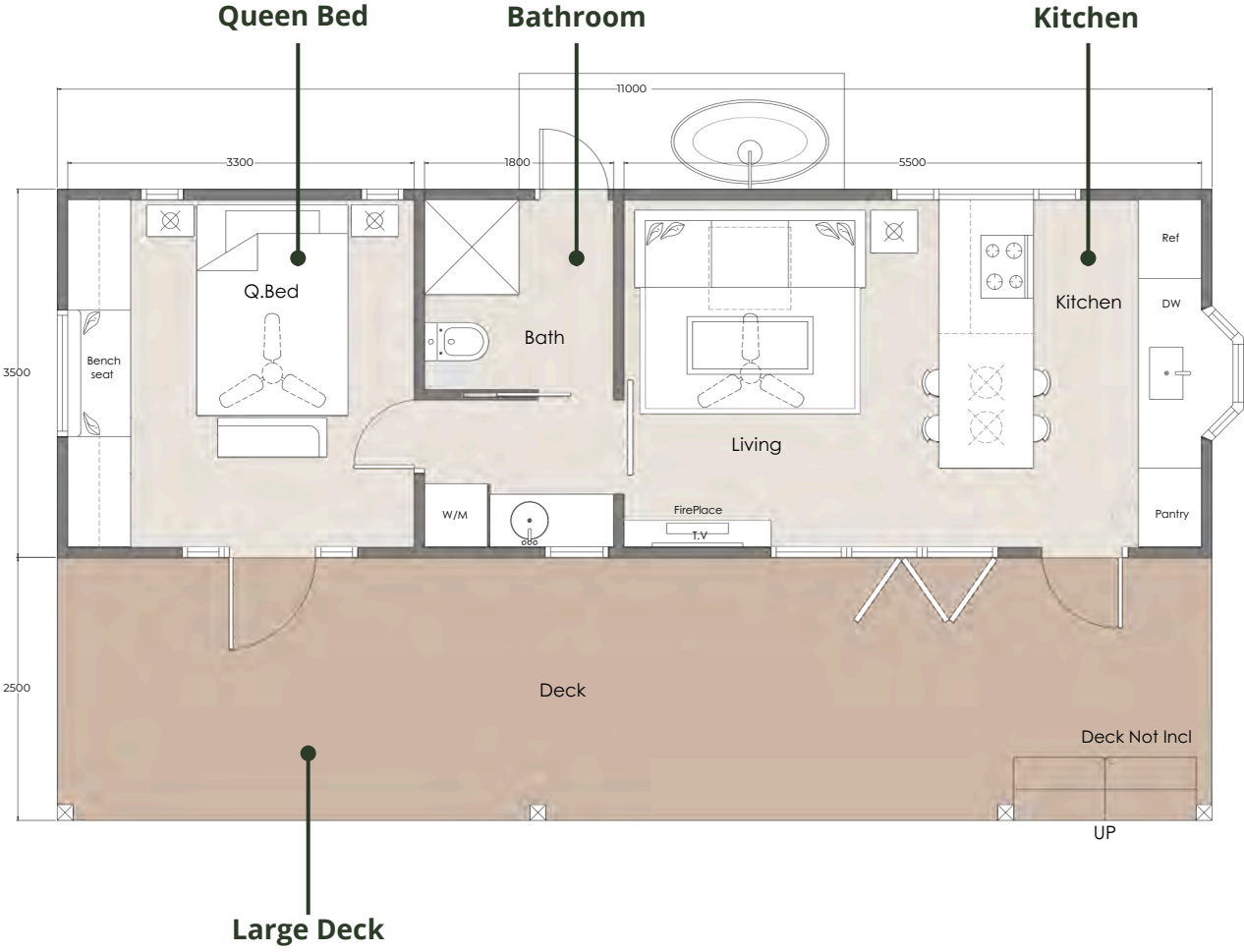
Full sized  
Kitchen



Full sized  
Bathroom



# Floor Plan



# THE ESCAPIST

AirBnb Model 8.0

SIZE: 8.45m L x 2.5m W x 4.2m H

Starting from \$129,000



Sleeps 2



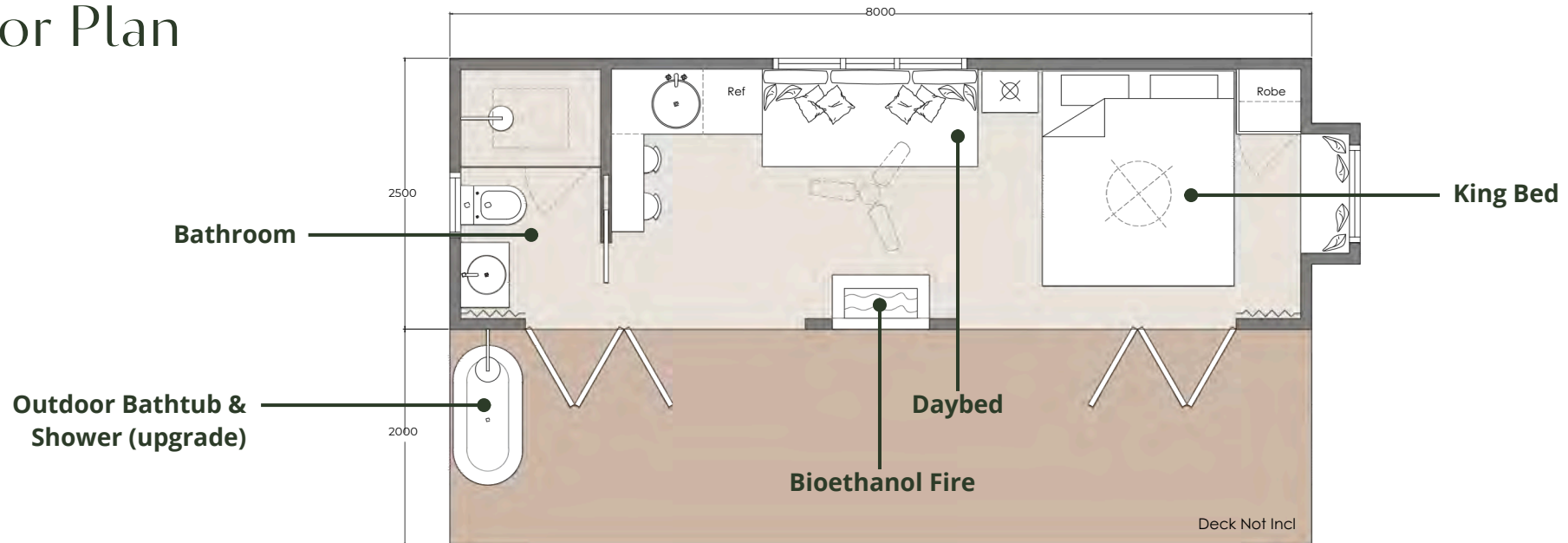
1 x King Bed



Outdoor Bath



## Floor Plan





# THE DEN

## Home Office & Studio

SIZE: 6.0m L x 2.5m W x 4.2m H

Starting from \$105,000



Fits 2



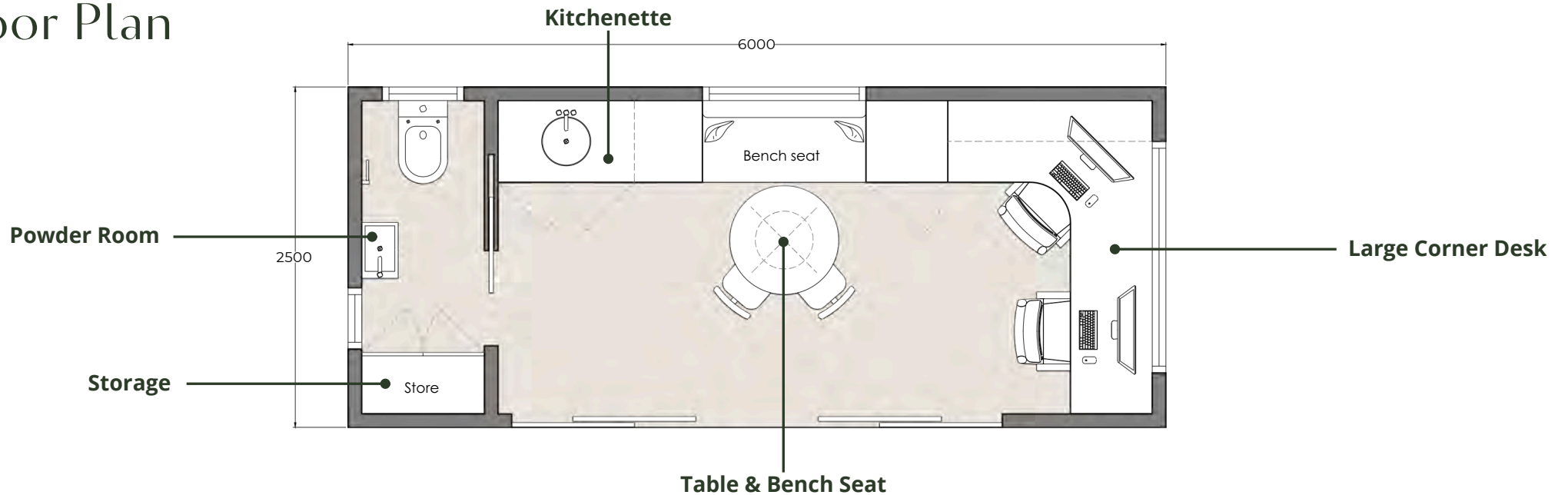
Kitchenette



Powder Room



## Floor Plan

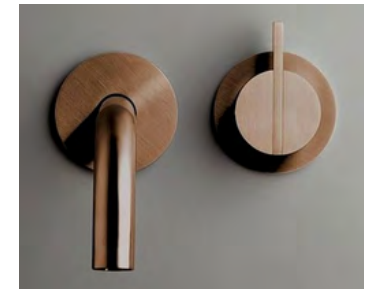




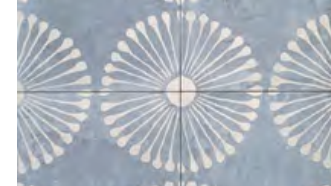


# Customisation

No two homes are ever alike at Big Life Tiny Home. We collaborate with you to ensure **every detail is uniquely yours**, from the wallpaper to the kitchen knobs, creating a space that reflects your personal style and needs.



## Bungalow MOOD BOARD





# Faq

## How much customisation is possible in a Big Life Tiny Home?

Our homes are **fully customisable!** From the layout and finishes to energy solutions and smart tech, we'll work with you to **design a home that perfectly fits your style and functional needs.** Your dream home, your way!

## Can I live off-grid in my tiny home?

Absolutely! At Big Life Tiny Home, off-grid living is a breeze. We offer **solar panels, rainwater systems, and composting or incinerating toilets**, so you'll have everything you need for sustainable, self-sufficient living. Whether you're looking to fully disconnect or just shrink your environmental footprint, we've got you covered!

## Are tiny homes on wheels legal?

Yes, tiny homes on wheels are legal in many parts of Australia, but the rules can vary by location. Don't worry—**we're here to guide you through the zoning laws and permits** to keep everything compliant. It's always a good idea to check your local council's website for specific regulations on tiny homes too.

## Can you deliver to my location?

**We deliver anywhere in Australia!** We work with trusted drivers who'll provide a quote and **ensure your tiny home is fully insured from door to door.** Got a tricky location? No problem! We have drivers that specialise in hard-to-reach spots, and our homes can even be craned in. As a rough guide, delivery costs around \$4 per km from postcode 2487.

## How long do Big Life Tiny Homes last?

With the right care, our Big Life Tiny Homes are **built to last for decades**, using sustainable, durable materials. Plus, **we offer warranties similar to traditional homes**, so you can enjoy peace of mind along with your tiny home lifestyle.

## Do I need DA approval for a secondary dwelling or granny flat?

In some cases, a Development Approval (DA) is needed, but new laws in Queensland **encourage secondary dwellings like granny flats**, often making a DA unnecessary. At Big Life Tiny Home, we'll stay on top of the latest regulations and help you figure out what approvals you'll need for your project.

Still have questions or need more info? Contact us today!

# Get in touch



(07) 5603 5501



[www.biglifetinyhome.com.au](http://www.biglifetinyhome.com.au)



[hello@biglifetinyhome.com.au](mailto:hello@biglifetinyhome.com.au)



Coolangatta, QLD, 2485

# Let's Connect



@biglife.tinyhome

